

# Child & Adult Care Food Program: Participation Trends 2018



February 2019

---

## About FRAC

The Food Research and Action Center (FRAC) is the leading national organization working for more effective public and private policies to eradicate domestic hunger and undernutrition.

For more information about FRAC, or to sign up for FRAC's Weekly News Digest, visit [www.frac.org](http://www.frac.org). For more information about CACFP, go to <http://frac.org/programs/child-adult-care-food-program>

## Acknowledgements

---

This report was prepared by Randy Rosso and Geri Henchy.

Many thanks to the United States Department of Agriculture's Food and Nutrition Service for providing the data used in this report. The CACFP data are preliminary.

---

# Child and Adult Care Food Program (CACFP)

**M**any low-income working parents rely on child care and afterschool programs to provide a safe and healthy place for their children while they commute and work. By paying for nutritious meals and snacks for eligible children who are enrolled at participating child care centers, family child care homes and afterschool programs, the Child and Adult Care Food Program (CACFP) plays an important role in improving the quality of those programs and in making them more affordable for low-income parents.

CACFP is a well-documented success. Young children can receive up to two meals and a snack that meet USDA nutritional standards. Studies have shown that children in CACFP receive meals that are nutritionally superior to those served to children in child care settings without CACFP. Children in participating institutions have higher intakes of key nutrients, fewer servings of fats and sweets, than children in non-participating care. Research cites participation in CACFP as one of the major factors influencing quality care.

Each year the Food Research and Action Center (FRAC) analyzes CACFP participation data for family child care homes and child care centers, which includes preschool and afterschool programs, provided by the United States Department of Agriculture (USDA) for the United States as a whole and for each of the 50 states and the District of Columbia. In 2018, 4.5 million children benefited daily from CACFP. Key findings for fiscal year 2018 include:

## **Child Care Centers**

- Nearly 3.8 million children enrolled in child care centers benefited daily from CACFP in fiscal year 2018, a 3.5 percent increase from fiscal year 2017.
- Nationally the number of child care centers participating in CACFP rose slightly to 66,112 in fiscal year 2018, a 1.2 percent increase from the previous year.

## **Family Child Care Homes**

- In fiscal year 2018, 720,597 children attending family child care homes relied on CACFP to provide healthy meals each day, a 4.8% drop from fiscal year 2017.
- Nationally 96,766 family child care homes participated in CACFP in fiscal year 2018, a 6.1 percent decrease from the previous year.

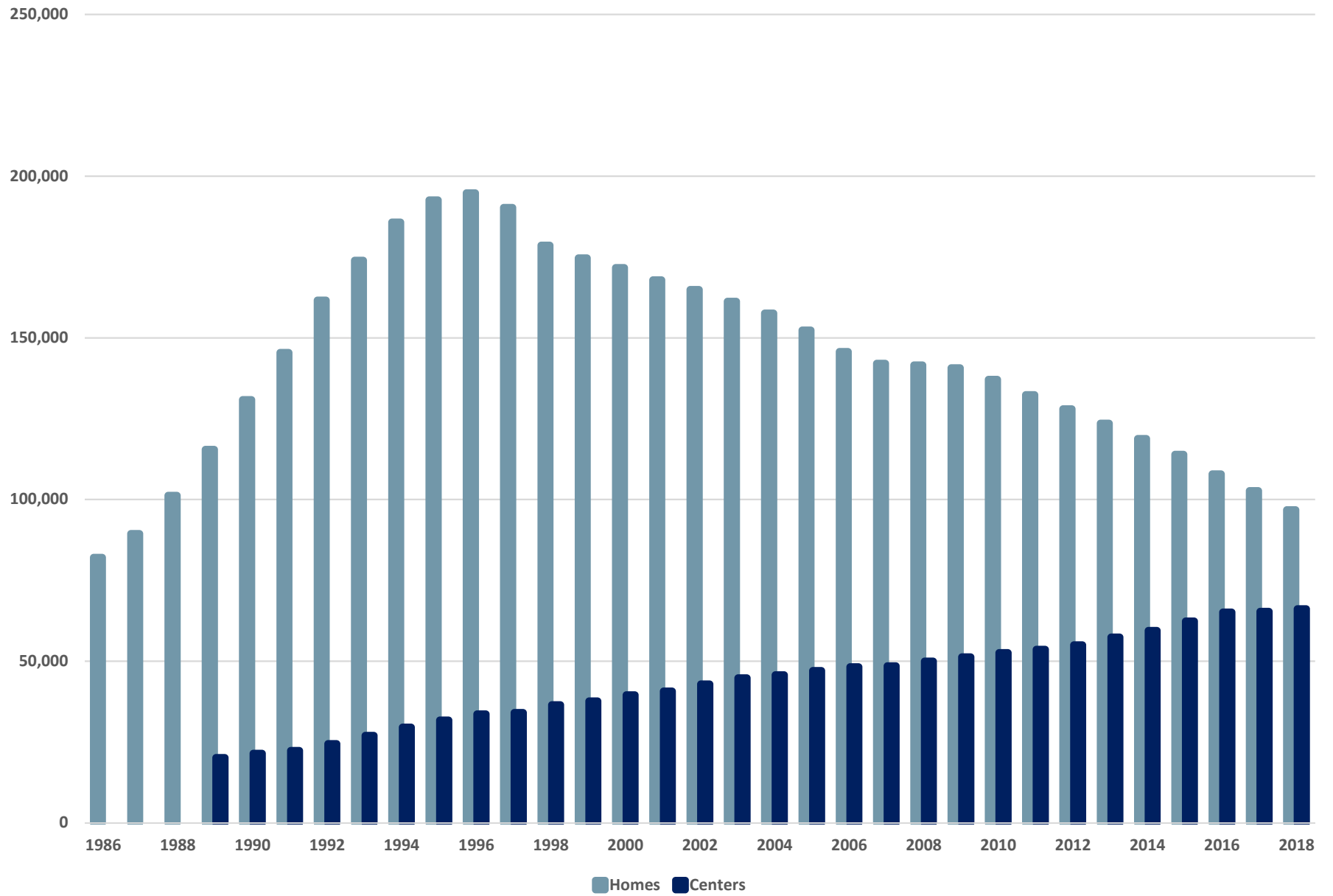
### **The Impact of the CACFP Means Test**

As part of the reform of welfare undertaken in 1996, major changes in the way family child care homes are reimbursed in the Child and Adult Care Food Program were mandated. A means test was instituted which effectively cut in half the federal reimbursement for meals and snacks for providers serving moderate-income children.

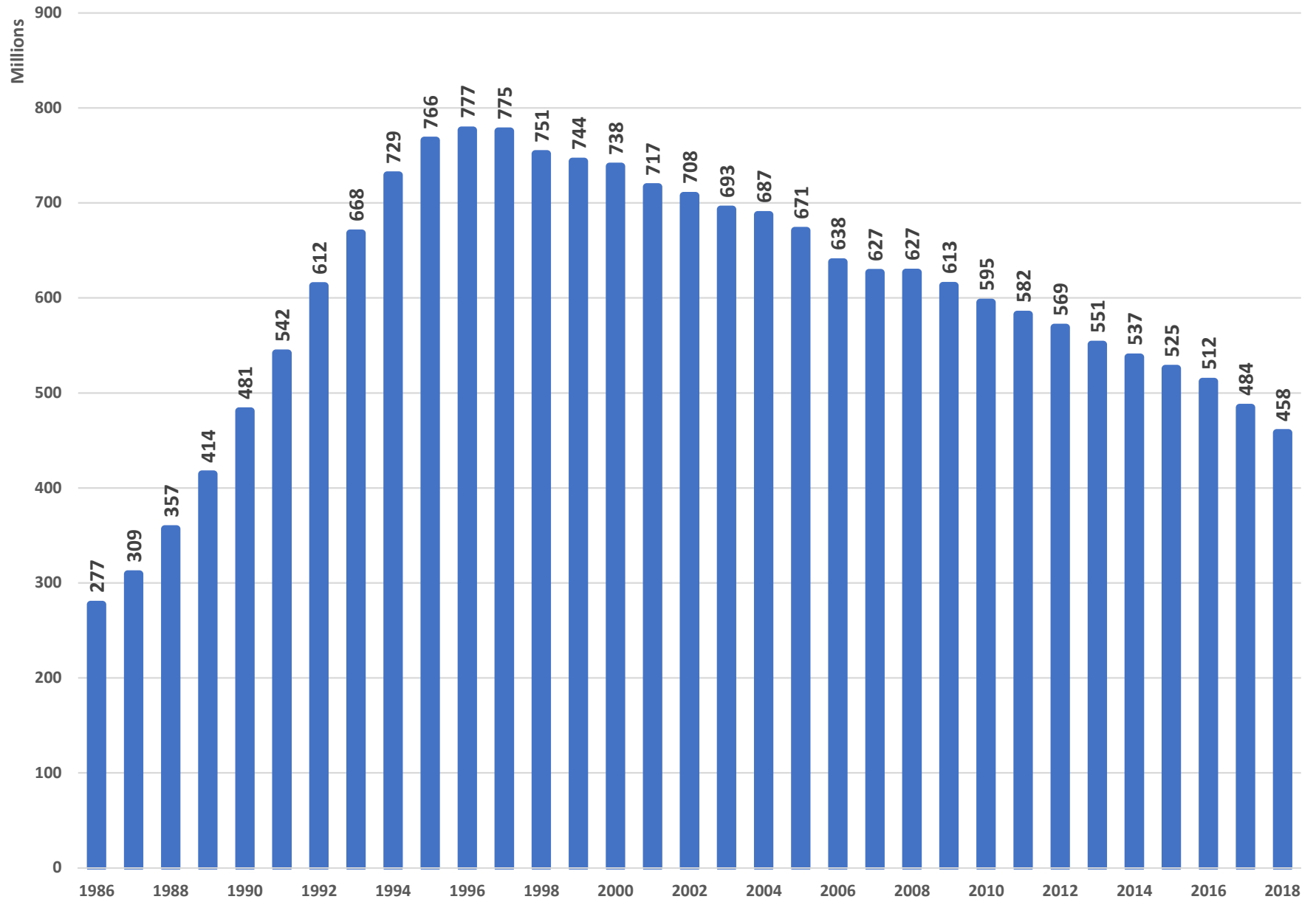
These changes have had negative consequences that continue to affect the program. Between 1996 and 2018 the number of family child care homes participating in CACFP dropped by 50.3 percent, while the number of children served fell by 255,619. This is in contrast to the growth of child care centers, including child care and afterschool programs, using CACFP over that time. During the same 20-year period, the participation of centers in CACFP grew by 96.6 percent and the number of children served by those centers grew by just over 2.38 million.



## Number of Family Child Care Homes and Child Care Centers



Number of Meals (in Millions) Served by Family Child Care Homes, FY 1986 - FY 2018



**Table 1**  
**Change in the Number of Child Care Centers, FY 1998 to FY 2018**

State	Total Centers FY 1998	Total Centers FY 2018	Number Change	Percent Change	Rank (Percent Change)
Alabama	491	1,011	520	106.0 %	14
Alaska	166	216	50	30.4 %	44
Arizona	710	804	95	13.4 %	49
Arkansas	443	1,081	638	144.2 %	9
California	3,570	7,866	4,297	120.4 %	12
Colorado	485	814	330	68.1 %	21
Connecticut	293	345	52	17.7 %	48
Delaware	111	380	269	241.8 %	3
District of Columbia	95	233	138	145.6 %	8
Florida	1,434	4,585	3,152	219.8 %	5
Georgia	1,106	2,109	1,004	90.8 %	17
Hawaii	225	209	-16	-7.2 %	50
Idaho	92	253	161	174.0 %	6
Illinois	1,888	2,395	507	26.9 %	45
Indiana	650	1,024	374	57.5 %	27
Iowa	500	594	95	18.9 %	47
Kansas	464	613	149	32.1 %	43
Kentucky	809	1,171	362	44.7 %	31
Louisiana	536	863	328	61.2 %	24
Maine	202	186	-17	-8.2 %	51
Maryland	401	1,352	951	237.3 %	4
Massachusetts	767	918	151	19.6 %	46
Michigan	1,010	1,627	617	61.1 %	26
Minnesota	592	799	208	35.1 %	36
Mississippi	356	807	451	126.5 %	11
Missouri	666	1,265	599	90.0 %	18
Montana	178	238	60	33.8 %	40
Nebraska	363	520	158	43.4 %	32
Nevada	65	360	295	453.1 %	1
New Hampshire	145	193	48	33.3 %	41
New Jersey	972	1,303	331	34.1 %	39
New Mexico	386	622	236	61.2 %	25
New York	3,032	4,079	1,047	34.5 %	37
North Carolina	1,707	2,289	582	34.1 %	38
North Dakota	121	199	78	64.1 %	22
Ohio	1,443	1,998	555	38.5 %	34
Oklahoma	698	1,014	316	45.3 %	30
Oregon	511	766	255	50.0 %	28
Pennsylvania	1,401	3,513	2,112	150.7 %	7
Rhode Island	116	204	88	76.4 %	20
South Carolina	361	670	309	85.5 %	19
South Dakota	161	241	80	49.8 %	29
Tennessee	712	1,499	787	110.6 %	13
Texas	1,856	6,753	4,897	263.8 %	2
Utah	275	364	90	32.6 %	42
Vermont	100	226	127	127.4 %	10
Virginia	785	1,536	751	95.7 %	15
Washington	829	1,359	531	64.1 %	23
West Virginia	357	683	326	91.4 %	16
Wisconsin	695	953	258	37.2 %	35
Wyoming	91	129	38	42.3 %	33
<b>US</b>	<b>36,418</b>	<b>66,112</b>	<b>29,695</b>	<b>81.5 %</b>	

Source: FRAC analysis of administrative CACFP data provided by USDA.

Note: US totals include Guam, Puerto Rico, and the U.S. Virgin Islands.

**Table 2**  
**Change in the Number of Child Care Centers, FY 2017 to FY 2018**

State	Total Centers FY 2017	Total Centers FY 2018	Number Change	Percent Change	Rank (Percent Change)
Alabama	976	1,011	34	3.5 %	14
Alaska	219	216	-3	-1.5 %	40
Arizona	756	804	49	6.5 %	7
Arkansas	1,167	1,081	-86	-7.4 %	49
California	7,817	7,866	50	.6 %	27
Colorado	826	814	-12	-1.4 %	38
Connecticut	308	345	38	12.2 %	3
Delaware	359	380	22	6.0 %	9
District of Columbia	269	233	-36	-13.4 %	50
Florida	4,516	4,585	70	1.5 %	22
Georgia	2,065	2,109	44	2.1 %	21
Hawaii	213	209	-4	-2.0 %	43
Idaho	243	253	10	4.1 %	12
Illinois	2,431	2,395	-36	-1.5 %	39
Indiana	1,036	1,024	-12	-1.1 %	36
Iowa	593	594	1	.2 %	28
Kansas	582	613	31	5.3 %	10
Kentucky	1,084	1,171	87	8.0 %	4
Louisiana	881	863	-17	-2.0 %	42
Maine	174	186	12	6.9 %	6
Maryland	1,353	1,352	-1	-.1 %	32
Massachusetts	934	918	-16	-1.7 %	41
Michigan	1,576	1,627	52	3.3 %	16
Minnesota	705	799	95	13.4 %	2
Mississippi	780	807	27	3.5 %	15
Missouri	1,192	1,265	73	6.1 %	8
Montana	325	238	-87	-26.7 %	51
Nebraska	548	520	-28	-5.0 %	47
Nevada	368	360	-8	-2.2 %	44
New Hampshire	195	193	-2	-.9 %	35
New Jersey	1,387	1,303	-84	-6.1 %	48
New Mexico	614	622	8	1.3 %	23
New York	4,129	4,079	-50	-1.2 %	37
North Carolina	2,237	2,289	53	2.3 %	19
North Dakota	197	199	2	1.0 %	26
Ohio	1,998	1,998	0	.0 %	31
Oklahoma	991	1,014	23	2.3 %	20
Oregon	769	766	-3	-.3 %	33
Pennsylvania	3,471	3,513	43	1.2 %	24
Rhode Island	205	204	-1	-.5 %	34
South Carolina	579	670	91	15.7 %	1
South Dakota	238	241	3	1.0 %	25
Tennessee	1,498	1,499	0	.0 %	30
Texas	6,544	6,753	209	3.2 %	17
Utah	347	364	17	4.9 %	11
Vermont	226	226	0	.1 %	29
Virginia	1,430	1,536	106	7.4 %	5
Washington	1,323	1,359	37	2.8 %	18
West Virginia	658	683	26	3.9 %	13
Wisconsin	976	953	-23	-2.3 %	46
Wyoming	132	129	-3	-2.3 %	45
<b>US</b>	<b>65,333</b>	<b>66,112</b>	<b>779</b>	<b>1.2 %</b>	

Source: FRAC analysis of administrative CACFP data provided by USDA.

Note: US totals include Guam, Puerto Rico, and the U.S. Virgin Islands.



**Table 3**  
**Change in the Average Daily Attendance of Child Care Centers, FY 1998 to FY 2018**

State	ADA Centers FY 1998	ADA Centers FY 2018	Number Change	Percent Change	Rank (Percent Change)
Alabama	23,535	59,999	36,464	154.9 %	18
Alaska	4,531	8,082	3,550	78.4 %	33
Arizona	34,696	33,291	-1,405	-4.0 %	51
Arkansas	16,409	51,652	35,243	214.8 %	9
California	146,377	491,501	345,124	235.8 %	7
Colorado	20,250	35,176	14,926	73.7 %	36
Connecticut	10,201	19,781	9,580	93.9 %	27
Delaware	6,321	19,890	13,568	214.6 %	10
District of Columbia	4,665	28,229	23,564	505.1 %	2
Florida	84,018	295,801	211,782	252.1 %	5
Georgia	72,134	127,663	55,529	77.0 %	34
Hawaii	7,808	9,418	1,610	20.6 %	49
Idaho	3,481	10,499	7,018	201.6 %	11
Illinois	67,357	114,589	47,231	70.1 %	39
Indiana	29,840	70,721	40,881	137.0 %	20
Iowa	16,765	28,957	12,192	72.7 %	37
Kansas	17,932	25,678	7,746	43.2 %	46
Kentucky	35,361	67,382	32,021	90.6 %	28
Louisiana	22,470	48,890	26,420	117.6 %	22
Maine	4,321	5,905	1,584	36.7 %	47
Maryland	18,429	61,991	43,562	236.4 %	6
Massachusetts	28,989	52,306	23,317	80.4 %	32
Michigan	39,399	67,790	28,391	72.1 %	38
Minnesota	19,532	51,223	31,691	162.3 %	15
Mississippi	23,074	45,352	22,279	96.6 %	26
Missouri	27,290	71,858	44,568	163.3 %	14
Montana	4,780	8,674	3,894	81.5 %	31
Nebraska	14,719	25,940	11,221	76.2 %	35
Nevada	3,326	23,350	20,024	602.1 %	1
New Hampshire	4,611	9,783	5,173	112.2 %	24
New Jersey	35,407	66,579	31,172	88.0 %	29
New Mexico	16,880	27,463	10,583	62.7 %	42
New York	175,877	218,225	42,348	24.1 %	48
North Carolina	76,035	118,671	42,635	56.1 %	43
North Dakota	4,882	9,107	4,225	86.5 %	30
Ohio	61,124	100,571	39,448	64.5 %	40
Oklahoma	27,335	54,323	26,988	98.7 %	25
Oregon	13,015	34,941	21,926	168.5 %	13
Pennsylvania	51,878	143,455	91,577	176.5 %	12
Rhode Island	6,230	7,257	1,027	16.5 %	50
South Carolina	16,994	43,184	26,191	154.1 %	19
South Dakota	5,104	10,861	5,757	112.8 %	23
Tennessee	29,008	75,616	46,608	160.7 %	16
Texas	103,920	611,273	507,353	488.2 %	3
Utah	14,029	21,470	7,441	53.0 %	45
Vermont	2,012	8,625	6,612	328.6 %	4
Virginia	26,619	86,152	59,532	223.6 %	8
Washington	25,692	66,944	41,253	160.6 %	17
West Virginia	9,247	20,186	10,939	118.3 %	21
Wisconsin	29,554	48,096	18,542	62.7 %	41
Wyoming	3,407	5,253	1,847	54.2 %	44
<b>US</b>	<b>1,570,882</b>	<b>3,768,193</b>	<b>2,197,311</b>	<b>139.9 %</b>	

Source: FRAC analysis of administrative CACFP data provided by USDA.

Note: US totals include Guam, Puerto Rico, and the U.S. Virgin Islands.

**Table 4**  
**Change in the Average Daily Attendance of Child Care Centers, FY 2017 to FY 2018**

State	ADA Centers FY 2017	ADA Centers FY 2018	Number Change	Percent Change	Rank (Percent Change)
Alabama	55,507	59,999	4,491	8.1 %	11
Alaska	8,545	8,082	-464	-5.4 %	45
Arizona	32,890	33,291	401	1.2 %	24
Arkansas	57,801	51,652	-6,149	-10.6 %	49
California	483,698	491,501	7,803	1.6 %	21
Colorado	36,202	35,176	-1,026	-2.8 %	40
Connecticut	17,649	19,781	2,132	12.1 %	6
Delaware	18,083	19,890	1,807	10.0 %	10
District of Columbia	30,281	28,229	-2,052	-6.8 %	46
Florida	285,515	295,801	10,286	3.6 %	15
Georgia	126,122	127,663	1,541	1.2 %	23
Hawaii	9,628	9,418	-210	-2.2 %	37
Idaho	10,130	10,499	370	3.6 %	14
Illinois	114,888	114,589	-299	-.3 %	31
Indiana	68,928	70,721	1,792	2.6 %	16
Iowa	28,853	28,957	104	.4 %	29
Kansas	24,688	25,678	991	4.0 %	13
Kentucky	60,421	67,382	6,961	11.5 %	7
Louisiana	50,849	48,890	-1,960	-3.9 %	44
Maine	4,906	5,905	999	20.4 %	3
Maryland	71,292	61,991	-9,301	-13.0 %	51
Massachusetts	52,517	52,306	-211	-.4 %	32
Michigan	67,191	67,790	600	.9 %	25
Minnesota	40,696	51,223	10,527	25.9 %	2
Mississippi	44,468	45,352	884	2.0 %	19
Missouri	60,970	71,858	10,889	17.9 %	4
Montana	8,886	8,674	-211	-2.4 %	38
Nebraska	26,957	25,940	-1,017	-3.8 %	43
Nevada	26,353	23,350	-3,003	-11.4 %	50
New Hampshire	9,629	9,783	155	1.6 %	22
New Jersey	71,860	66,579	-5,281	-7.3 %	48
New Mexico	27,785	27,463	-322	-1.2 %	33
New York	224,771	218,225	-6,546	-2.9 %	41
North Carolina	116,304	118,671	2,367	2.0 %	18
North Dakota	9,227	9,107	-120	-1.3 %	34
Ohio	100,049	100,571	522	.5 %	28
Oklahoma	48,748	54,323	5,575	11.4 %	8
Oregon	35,797	34,941	-856	-2.4 %	39
Pennsylvania	143,203	143,455	252	.2 %	30
Rhode Island	7,389	7,257	-132	-1.8 %	35
South Carolina	33,191	43,184	9,993	30.1 %	1
South Dakota	10,766	10,861	95	.9 %	26
Tennessee	73,765	75,616	1,851	2.5 %	17
Texas	530,993	611,273	80,281	15.1 %	5
Utah	20,088	21,470	1,383	6.9 %	12
Vermont	9,268	8,625	-644	-6.9 %	47
Virginia	77,368	86,152	8,783	11.4 %	9
Washington	69,494	66,944	-2,550	-3.7 %	42
West Virginia	19,811	20,186	375	1.9 %	20
Wisconsin	49,012	48,096	-917	-1.9 %	36
Wyoming	5,213	5,253	41	.8 %	27
<b>US</b>	<b>3,639,021</b>	<b>3,768,193</b>	<b>129,173</b>	<b>3.5 %</b>	

Source: FRAC analysis of administrative CACFP data provided by USDA.

Note: US totals include Guam, Puerto Rico, and the U.S. Virgin Islands.

**Table 5**  
**Change in the Number of Family Child Care Homes, FY 1998 to FY 2018**

State	Total Homes FY 1998	Total Homes FY 2018	Number Change	Percent Change	Rank (Percent Change)
Alabama	2,754	633	-2,120	-77.0 %	50
Alaska	611	213	-398	-65.1 %	38
Arizona	4,128	1,974	-2,154	-52.2 %	20
Arkansas	1,100	285	-816	-74.1 %	47
California	21,926	13,241	-8,684	-39.6 %	11
Colorado	4,158	989	-3,168	-76.2 %	49
Connecticut	1,759	780	-979	-55.6 %	24
Delaware	1,221	497	-725	-59.3 %	30
District of Columbia	128	32	-96	-75.3 %	48
Florida	2,681	1,742	-939	-35.0 %	9
Georgia	3,035	1,240	-1,794	-59.1 %	29
Hawaii	468	212	-256	-54.7 %	22
Idaho	506	159	-347	-68.5 %	43
Illinois	6,849	5,737	-1,112	-16.2 %	6
Indiana	1,855	1,914	59	3.2 %	4
Iowa	2,170	1,588	-583	-26.9 %	7
Kansas	5,192	2,672	-2,520	-48.5 %	15
Kentucky	743	244	-499	-67.2 %	42
Louisiana	7,273	8,621	1,349	18.5 %	1
Maine	1,763	753	-1,010	-57.3 %	27
Maryland	4,779	2,342	-2,437	-51.0 %	19
Massachusetts	6,675	3,661	-3,014	-45.2 %	13
Michigan	8,682	3,507	-5,175	-59.6 %	31
Minnesota	11,501	5,881	-5,620	-48.9 %	16
Mississippi	781	870	89	11.4 %	2
Missouri	2,478	966	-1,513	-61.0 %	35
Montana	1,236	491	-746	-60.3 %	34
Nebraska	3,308	1,797	-1,511	-45.7 %	14
Nevada	402	110	-292	-72.6 %	45
New Hampshire	313	70	-243	-77.6 %	51
New Jersey	1,057	357	-700	-66.3 %	41
New Mexico	6,759	1,833	-4,926	-72.9 %	46
New York	8,226	8,538	312	3.8 %	3
North Carolina	3,601	1,450	-2,151	-59.7 %	32
North Dakota	1,966	845	-1,122	-57.1 %	26
Ohio	4,046	1,727	-2,320	-57.3 %	28
Oklahoma	2,317	1,413	-904	-39.0 %	10
Oregon	5,226	1,767	-3,459	-66.2 %	40
Pennsylvania	2,625	1,312	-1,313	-50.0 %	17
Rhode Island	232	214	-18	-7.9 %	5
South Carolina	1,155	427	-728	-63.0 %	37
South Dakota	839	391	-448	-53.4 %	21
Tennessee	1,848	1,255	-594	-32.1 %	8
Texas	8,526	4,256	-4,270	-50.1 %	18
Utah	3,755	1,416	-2,339	-62.3 %	36
Vermont	816	365	-451	-55.2 %	23
Virginia	3,372	1,857	-1,516	-44.9 %	12
Washington	5,266	1,502	-3,764	-71.5 %	44
West Virginia	1,637	726	-912	-55.7 %	25
Wisconsin	4,002	1,608	-2,395	-59.8 %	33
Wyoming	636	219	-418	-65.7 %	39
<b>US</b>	<b>178,515</b>	<b>96,766</b>	<b>-81,749</b>	<b>-45.8 %</b>	

Source: FRAC analysis of administrative CACFP data provided by USDA.

Note: US totals include Guam, Puerto Rico, and the U.S. Virgin Islands.

**Table 6**  
**Change in the Number of Family Child Care Homes, FY 2017 to FY 2018**

State	Total Homes FY 2017	Total Homes FY 2018	Number Change	Percent Change	Rank (Percent Change)
Alabama	676	633	-43	-6.4 %	17
Alaska	230	213	-17	-7.3 %	23
Arizona	2,084	1,974	-111	-5.3 %	10
Arkansas	318	285	-33	-10.5 %	42
California	13,630	13,241	-388	-2.8 %	3
Colorado	1,091	989	-102	-9.3 %	37
Connecticut	821	780	-41	-4.9 %	6
Delaware	525	497	-28	-5.3 %	11
District of Columbia	50	32	-18	-36.4 %	51
Florida	1,842	1,742	-100	-5.4 %	12
Georgia	1,372	1,240	-132	-9.6 %	40
Hawaii	230	212	-19	-8.0 %	30
Idaho	195	159	-35	-18.1 %	50
Illinois	6,139	5,737	-402	-6.5 %	18
Indiana	2,019	1,914	-105	-5.2 %	8
Iowa	1,681	1,588	-93	-5.5 %	14
Kansas	2,848	2,672	-176	-6.2 %	15
Kentucky	279	244	-35	-12.6 %	46
Louisiana	8,610	8,621	11	.1 %	1
Maine	818	753	-64	-7.9 %	27
Maryland	2,571	2,342	-229	-8.9 %	34
Massachusetts	3,858	3,661	-197	-5.1 %	7
Michigan	3,685	3,507	-179	-4.9 %	5
Minnesota	6,478	5,881	-598	-9.2 %	36
Mississippi	940	870	-71	-7.5 %	26
Missouri	1,019	966	-54	-5.3 %	9
Montana	561	491	-70	-12.4 %	45
Nebraska	1,930	1,797	-133	-6.9 %	20
Nevada	112	110	-2	-1.8 %	2
New Hampshire	75	70	-5	-6.7 %	19
New Jersey	435	357	-79	-18.1 %	49
New Mexico	1,981	1,833	-148	-7.5 %	25
New York	8,872	8,538	-334	-3.8 %	4
North Carolina	1,630	1,450	-181	-11.1 %	43
North Dakota	942	845	-97	-10.3 %	41
Ohio	2,009	1,727	-282	-14.0 %	47
Oklahoma	1,509	1,413	-96	-6.3 %	16
Oregon	1,909	1,767	-142	-7.5 %	24
Pennsylvania	1,447	1,312	-135	-9.3 %	38
Rhode Island	232	214	-19	-8.0 %	28
South Carolina	452	427	-25	-5.5 %	13
South Dakota	459	391	-69	-14.9 %	48
Tennessee	1,372	1,255	-117	-8.5 %	32
Texas	4,625	4,256	-369	-8.0 %	29
Utah	1,565	1,416	-150	-9.6 %	39
Vermont	402	365	-37	-9.2 %	35
Virginia	2,033	1,857	-176	-8.7 %	33
Washington	1,638	1,502	-136	-8.3 %	31
West Virginia	781	726	-56	-7.1 %	22
Wisconsin	1,731	1,608	-123	-7.1 %	21
Wyoming	247	219	-29	-11.6 %	44
<b>US</b>	<b>103,039</b>	<b>96,766</b>	<b>-6,273</b>	<b>-6.1 %</b>	

Source: FRAC analysis of administrative CACFP data provided by USDA.

Note: US totals include Guam, Puerto Rico, and the U.S. Virgin Islands.

**Table 7**  
**Change in the Average Daily Attendance of Family Child Care Homes, FY 1998 to FY 2018**

State	ADA Homes FY 1998	ADA Homes FY 2018	Number Change	Percent Change	Rank (Percent Change)
Alabama	11,178	3,702	-7,476	-66.9 %	47
Alaska	2,620	1,415	-1,206	-46.0 %	32
Arizona	11,330	16,021	4,691	41.4 %	3
Arkansas	5,509	2,443	-3,067	-55.7 %	40
California	133,621	108,751	-24,870	-18.6 %	14
Colorado	22,234	6,406	-15,827	-71.2 %	50
Connecticut	9,726	3,829	-5,898	-60.6 %	43
Delaware	6,322	3,649	-2,674	-42.3 %	25
District of Columbia	361	205	-156	-43.1 %	29
Florida	12,368	11,236	-1,132	-9.2 %	11
Georgia	19,738	14,891	-4,847	-24.6 %	15
Hawaii	1,338	1,001	-337	-25.2 %	17
Idaho	2,918	1,493	-1,425	-48.8 %	34
Illinois	27,873	21,013	-6,860	-24.6 %	16
Indiana	16,005	22,611	6,606	41.3 %	4
Iowa	10,098	13,345	3,247	32.2 %	6
Kansas	36,175	22,539	-13,636	-37.7 %	23
Kentucky	4,424	2,413	-2,011	-45.5 %	30
Louisiana	31,925	43,203	11,279	35.3 %	5
Maine	10,995	5,032	-5,963	-54.2 %	38
Maryland	26,676	13,814	-12,862	-48.2 %	33
Massachusetts	23,425	22,105	-1,320	-5.6 %	10
Michigan	31,793	28,499	-3,294	-10.4 %	12
Minnesota	73,597	46,280	-27,317	-37.1 %	22
Mississippi	4,034	4,240	207	5.1 %	8
Missouri	18,175	9,816	-8,359	-46.0 %	31
Montana	9,089	4,361	-4,728	-52.0 %	36
Nebraska	22,931	14,170	-8,761	-38.2 %	24
Nevada	1,486	628	-859	-57.8 %	42
New Hampshire	1,960	565	-1,395	-71.2 %	51
New Jersey	5,082	1,930	-3,152	-62.0 %	44
New Mexico	26,045	7,890	-18,155	-69.7 %	49
New York	51,221	78,260	27,040	52.8 %	2
North Carolina	20,303	10,016	-10,286	-50.7 %	35
North Dakota	12,816	7,365	-5,451	-42.5 %	26
Ohio	18,608	12,523	-6,085	-32.7 %	19
Oklahoma	18,319	8,195	-10,124	-55.3 %	39
Oregon	22,842	12,999	-9,842	-43.1 %	28
Pennsylvania	16,822	10,728	-6,094	-36.2 %	21
Rhode Island	1,181	1,432	251	21.3 %	7
South Carolina	9,289	3,181	-6,108	-65.8 %	46
South Dakota	6,218	4,037	-2,181	-35.1 %	20
Tennessee	11,266	11,365	99	.9 %	9
Texas	46,567	33,787	-12,781	-27.4 %	18
Utah	23,194	10,857	-12,338	-53.2 %	37
Vermont	5,307	4,395	-913	-17.2 %	13
Virginia	14,890	24,748	9,858	66.2 %	1
Washington	36,199	11,897	-24,302	-67.1 %	48
West Virginia	6,550	3,749	-2,801	-42.8 %	27
Wisconsin	22,527	9,718	-12,809	-56.9 %	41
Wyoming	4,600	1,649	-2,951	-64.1 %	45
<b>US</b>	<b>970,216</b>	<b>720,597</b>	<b>-249,619</b>	<b>-25.7 %</b>	

Source: FRAC analysis of administrative CACFP data provided by USDA.

Note: US totals include Guam, Puerto Rico, and the U.S. Virgin Islands.

**Table 8**  
**Change in the Average Daily Attendance of Family Child Care Homes, FY 2017 to FY 2018**

State	ADA Homes FY 2017	ADA Homes FY 2018	Number Change	Percent Change	Rank (Percent Change)
Alabama	3,842	3,702	-140	-3.6 %	10
Alaska	1,458	1,415	-43	-3.0 %	9
Arizona	9,022	16,021	6,999	77.6 %	1
Arkansas	2,678	2,443	-235	-8.8 %	33
California	110,402	108,751	-1,651	-1.5 %	6
Colorado	6,700	6,406	-293	-4.4 %	13
Connecticut	4,302	3,829	-474	-11.0 %	40
Delaware	3,905	3,649	-256	-6.6 %	26
District of Columbia	235	205	-30	-12.6 %	43
Florida	11,689	11,236	-453	-3.9 %	11
Georgia	14,691	14,891	201	1.4 %	4
Hawaii	1,094	1,001	-93	-8.5 %	32
Idaho	2,028	1,493	-535	-26.4 %	50
Illinois	23,417	21,013	-2,404	-10.3 %	38
Indiana	24,466	22,611	-1,855	-7.6 %	28
Iowa	14,005	13,345	-661	-4.7 %	17
Kansas	22,691	22,539	-152	-.7 %	5
Kentucky	3,043	2,413	-630	-20.7 %	48
Louisiana	42,555	43,203	648	1.5 %	3
Maine	5,302	5,032	-270	-5.1 %	19
Maryland	14,951	13,814	-1,137	-7.6 %	29
Massachusetts	23,570	22,105	-1,466	-6.2 %	23
Michigan	29,705	28,499	-1,207	-4.1 %	12
Minnesota	50,924	46,280	-4,644	-9.1 %	35
Mississippi	4,851	4,240	-611	-12.6 %	44
Missouri	10,315	9,816	-499	-4.8 %	18
Montana	4,833	4,361	-472	-9.8 %	37
Nebraska	15,150	14,170	-980	-6.5 %	25
Nevada	657	628	-29	-4.4 %	14
New Hampshire	601	565	-36	-6.0 %	21
New Jersey	2,300	1,930	-370	-16.1 %	47
New Mexico	8,352	7,890	-462	-5.5 %	20
New York	79,470	78,260	-1,210	-1.5 %	7
North Carolina	9,450	10,016	567	6.0 %	2
North Dakota	8,091	7,365	-726	-9.0 %	34
Ohio	14,588	12,523	-2,065	-14.2 %	46
Oklahoma	8,932	8,195	-737	-8.2 %	31
Oregon	13,597	12,999	-597	-4.4 %	15
Pennsylvania	14,568	10,728	-3,840	-26.4 %	49
Rhode Island	1,548	1,432	-116	-7.5 %	27
South Carolina	3,385	3,181	-205	-6.0 %	22
South Dakota	4,613	4,037	-576	-12.5 %	42
Tennessee	12,131	11,365	-767	-6.3 %	24
Texas	37,689	33,787	-3,902	-10.4 %	39
Utah	12,545	10,857	-1,689	-13.5 %	45
Vermont	7,704	4,395	-3,309	-43.0 %	51
Virginia	25,270	24,748	-522	-2.1 %	8
Washington	13,100	11,897	-1,203	-9.2 %	36
West Virginia	3,930	3,749	-181	-4.6 %	16
Wisconsin	10,522	9,718	-804	-7.6 %	30
Wyoming	1,856	1,649	-207	-11.2 %	41
<b>US</b>	<b>756,960</b>	<b>720,597</b>	<b>-36,363</b>	<b>-4.8 %</b>	

Source: FRAC analysis of administrative CACFP data provided by USDA.

Note: US totals include Guam, Puerto Rico, and the U.S. Virgin Islands.

**Table 9**  
**Number and Percentage of Tier I Family Child Care Homes FY 2018**

State	CACFP Total Number of Homes	Total Tier I Homes	Tier I Homes as Percent of Total	Rank (Homes as Percent of Total)
Alabama	633	611	95.3 %	13
Alaska	213	184	82.9 %	35
Arizona	1,974	1,955	98.9 %	6
Arkansas	285	284	97.6 %	10
California	13,241	12,176	91.6 %	27
Colorado	989	800	78.6 %	43
Connecticut	780	635	81.4 %	37
Delaware	497	475	94.4 %	17
District of Columbia	32	41	100.0 %	1
Florida	1,742	1,730	98.8 %	7
Georgia	1,240	1,198	94.2 %	18
Hawaii	212	198	90.8 %	28
Idaho	159	148	93.1 %	21
Illinois	5,737	5,230	89.7 %	31
Indiana	1,914	1,775	91.6 %	26
Iowa	1,588	1,316	81.2 %	38
Kansas	2,672	2,225	81.7 %	36
Kentucky	244	233	92.8 %	22
Louisiana	8,621	8,529	99.7 %	2
Maine	753	685	90.4 %	29
Maryland	2,342	1,868	79.1 %	42
Massachusetts	3,661	2,975	80.9 %	39
Michigan	3,507	3,047	86.1 %	32
Minnesota	5,881	3,299	55.1 %	50
Mississippi	870	854	99.5 %	4
Missouri	966	909	92.5 %	23
Montana	491	439	85.7 %	33
Nebraska	1,797	1,487	80.9 %	40
Nevada	110	88	80.0 %	41
New Hampshire	70	31	43.7 %	51
New Jersey	357	347	92.0 %	25
New Mexico	1,833	1,839	99.7 %	3
New York	8,538	8,045	93.6 %	19
North Carolina	1,450	1,416	96.3 %	11
North Dakota	845	519	59.8 %	49
Ohio	1,727	1,673	95.1 %	14
Oklahoma	1,413	1,346	94.5 %	16
Oregon	1,767	1,666	93.5 %	20
Pennsylvania	1,312	1,266	94.8 %	15
Rhode Island	214	209	95.4 %	12
South Carolina	427	420	98.4 %	9
South Dakota	391	281	70.6 %	48
Tennessee	1,255	1,247	99.1 %	5
Texas	4,256	3,971	92.2 %	24
Utah	1,416	1,314	89.8 %	30
Vermont	365	275	73.5 %	46
Virginia	1,857	1,410	74.9 %	45
Washington	1,502	1,308	85.2 %	34
West Virginia	726	729	98.5 %	8
Wisconsin	1,608	1,205	73.0 %	47
Wyoming	219	161	75.9 %	44
<b>US</b>	<b>96,766</b>	<b>86,145</b>	<b>88.1%</b>	

Source: FRAC analysis of administrative CACFP data provided by USDA.

Note: US totals include Guam, Puerto Rico, and the U.S. Virgin Islands.

**Table 10**  
**Change in the Number of Child Care Centers, FY 1996 to FY 2018**

State	Total Centers FY 1996	Total Centers FY 2018	Number Change	Percent Change	Rank (Percent Change)
Alabama	456	1,011	555	121.6 %	12
Alaska	159	216	57	35.7 %	45
Arizona	549	804	255	46.5 %	36
Arkansas	394	1,081	687	174.4 %	7
California	3,342	7,866	4,524	135.4 %	10
Colorado	441	814	373	84.6 %	22
Connecticut	268	345	77	28.7 %	47
Delaware	93	380	287	308.9 %	2
District of Columbia	106	233	127	119.6 %	13
Florida	1,219	4,585	3,366	276.1 %	4
Georgia	983	2,109	1,126	114.6 %	15
Hawaii	231	209	-23	-9.7 %	51
Idaho	98	253	155	157.9 %	8
Illinois	1,477	2,395	918	62.2 %	29
Indiana	700	1,024	324	46.3 %	38
Iowa	515	594	79	15.4 %	49
Kansas	427	613	186	43.6 %	43
Kentucky	790	1,171	381	48.2 %	35
Louisiana	500	863	363	72.6 %	26
Maine	202	186	-16	-8.0 %	50
Maryland	399	1,352	953	238.8 %	5
Massachusetts	703	918	215	30.5 %	46
Michigan	898	1,627	729	81.2 %	24
Minnesota	565	799	234	41.5 %	44
Mississippi	361	807	446	123.5 %	11
Missouri	614	1,265	651	106.1 %	16
Montana	163	238	75	45.9 %	39
Nebraska	332	520	188	56.6 %	32
Nevada	60	360	300	499.2 %	1
New Hampshire	132	193	61	46.4 %	37
New Jersey	898	1,303	405	45.1 %	40
New Mexico	376	622	246	65.4 %	27
New York	2,247	4,079	1,832	81.5 %	23
North Carolina	1,457	2,289	832	57.1 %	31
North Dakota	104	199	95	91.3 %	20
Ohio	1,387	1,998	611	44.1 %	42
Oklahoma	678	1,014	336	49.5 %	34
Oregon	479	766	287	60.0 %	30
Pennsylvania	1,486	3,513	2,027	136.4 %	9
Rhode Island	106	204	98	92.2 %	19
South Carolina	308	670	362	117.6 %	14
South Dakota	155	241	86	55.3 %	33
Tennessee	790	1,499	709	89.7 %	21
Texas	1,708	6,753	5,045	295.4 %	3
Utah	303	364	61	20.2 %	48
Vermont	72	226	154	214.2 %	6
Virginia	756	1,536	780	103.2 %	17
Washington	778	1,359	581	74.7 %	25
West Virginia	349	683	334	95.8 %	18
Wisconsin	657	953	296	45.0 %	41
Wyoming	78	129	51	65.1 %	28
<b>US</b>	<b>33,627</b>	<b>66,112</b>	<b>32,485</b>	<b>96.6 %</b>	

Source: FRAC analysis of administrative CACFP data provided by USDA.

Note: US totals include Guam, Puerto Rico, and the U.S. Virgin Islands.



**Table 11**  
**Change in the Average Daily Attendance of Child Care Centers, FY 1996 to FY 2018**

State	ADA Centers FY 1996	ADA Centers FY 2018	Number Change	Percent Change	Rank (Percent Change)
Alabama	21,000	55,507	38,999	185.7 %	16
Alaska	4,577	8,545	3,505	76.6 %	41
Arizona	29,304	32,890	3,987	13.6 %	51
Arkansas	14,504	57,801	37,148	256.1 %	8
California	136,428	483,698	355,073	260.3 %	6
Colorado	18,068	36,202	17,108	94.7 %	34
Connecticut	9,027	17,649	10,754	119.1 %	27
Delaware	5,599	18,083	14,291	255.2 %	9
District of Columbia	3,866	30,281	24,363	630.2 %	2
Florida	62,474	285,515	233,327	373.5 %	4
Georgia	57,336	126,122	70,327	122.7 %	25
Hawaii	7,563	9,628	1,855	24.5 %	50
Idaho	3,486	10,130	7,013	201.2 %	11
Illinois	51,000	114,888	63,589	124.7 %	24
Indiana	25,176	68,928	45,545	180.9 %	20
Iowa	16,895	28,853	12,062	71.4 %	42
Kansas	16,532	24,688	9,146	55.3 %	45
Kentucky	32,600	60,421	34,782	106.7 %	31
Louisiana	19,362	50,849	29,528	152.5 %	22
Maine	4,103	4,906	1,802	43.9 %	47
Maryland	17,326	71,292	44,665	257.8 %	7
Massachusetts	25,263	52,517	27,043	107.0 %	30
Michigan	35,446	67,191	32,344	91.2 %	37
Minnesota	17,463	40,696	33,760	193.3 %	14
Mississippi	22,222	44,468	23,130	104.1 %	32
Missouri	24,420	60,970	47,438	194.3 %	13
Montana	4,488	8,886	4,186	93.3 %	35
Nebraska	13,485	26,957	12,455	92.4 %	36
Nevada	3,096	26,353	20,254	654.2 %	1
New Hampshire	4,313	9,629	5,470	126.8 %	23
New Jersey	33,607	71,860	32,972	98.1 %	33
New Mexico	15,513	27,785	11,950	77.0 %	39
New York	123,407	224,771	94,818	76.8 %	40
North Carolina	75,307	116,304	43,364	57.6 %	44
North Dakota	4,238	9,227	4,869	114.9 %	29
Ohio	58,932	100,049	41,639	70.7 %	43
Oklahoma	24,445	48,748	29,878	122.2 %	26
Oregon	12,388	35,797	22,553	182.1 %	19
Pennsylvania	48,036	143,203	95,419	198.6 %	12
Rhode Island	5,271	7,389	1,986	37.7 %	49
South Carolina	15,309	33,191	27,875	182.1 %	18
South Dakota	4,966	10,766	5,895	118.7 %	28
Tennessee	26,036	73,765	49,580	190.4 %	15
Texas	91,930	530,993	519,343	564.9 %	3
Utah	14,963	20,088	6,507	43.5 %	48
Vermont	1,931	9,268	6,694	346.6 %	5
Virginia	27,238	77,368	58,914	216.3 %	10
Washington	26,026	69,494	40,918	157.2 %	21
West Virginia	7,116	19,811	13,070	183.7 %	17
Wisconsin	26,863	49,012	21,233	79.0 %	38
Wyoming	3,572	5,213	1,681	47.1 %	46
<b>US</b>	<b>1,384,225</b>	<b>3,768,193</b>	<b>2,383,968</b>	<b>172.2 %</b>	

Source: FRAC analysis of administrative CACFP data provided by USDA.

Note: US totals include Guam, Puerto Rico, and the U.S. Virgin Islands.

**Table 12**  
**Change in the Number of Family Child Care Homes, FY 1996 to FY 2018**

State	Total Homes FY 1996	Total Homes FY 2018	Number Change	Percent Change	Rank (Percent Change)
Alabama	2,427	633	-1,794	-73.9 %	44
Alaska	577	213	-364	-63.0 %	33
Arizona	4,114	1,974	-2,141	-52.0 %	17
Arkansas	1,107	285	-822	-74.3 %	45
California	24,008	13,241	-10,767	-44.8 %	11
Colorado	4,938	989	-3,949	-80.0 %	50
Connecticut	2,288	780	-1,508	-65.9 %	36
Delaware	1,308	497	-812	-62.0 %	29
District of Columbia	133	32	-102	-76.3 %	47
Florida	2,623	1,742	-881	-33.6 %	8
Georgia	2,542	1,240	-1,302	-51.2 %	15
Hawaii	532	212	-320	-60.2 %	26
Idaho	574	159	-415	-72.3 %	42
Illinois	7,306	5,737	-1,569	-21.5 %	6
Indiana	2,298	1,914	-384	-16.7 %	5
Iowa	2,658	1,588	-1,071	-40.3 %	10
Kansas	6,153	2,672	-3,481	-56.6 %	20
Kentucky	712	244	-469	-65.8 %	35
Louisiana	8,675	8,621	-54	-.6 %	2
Maine	1,745	753	-992	-56.8 %	21
Maryland	5,646	2,342	-3,304	-58.5 %	23
Massachusetts	7,012	3,661	-3,351	-47.8 %	12
Michigan	9,476	3,507	-5,970	-63.0 %	32
Minnesota	12,768	5,881	-6,887	-53.9 %	18
Mississippi	958	870	-88	-9.2 %	4
Missouri	2,667	966	-1,702	-63.8 %	34
Montana	1,299	491	-808	-62.2 %	30
Nebraska	3,706	1,797	-1,909	-51.5 %	16
Nevada	466	110	-356	-76.3 %	48
New Hampshire	395	70	-325	-82.3 %	51
New Jersey	1,689	357	-1,333	-78.9 %	49
New Mexico	6,891	1,833	-5,058	-73.4 %	43
New York	7,309	8,538	1,229	16.8 %	1
North Carolina	3,172	1,450	-1,722	-54.3 %	19
North Dakota	2,201	845	-1,357	-61.6 %	28
Ohio	5,179	1,727	-3,452	-66.7 %	38
Oklahoma	2,216	1,413	-803	-36.2 %	9
Oregon	5,753	1,767	-3,986	-69.3 %	40
Pennsylvania	3,212	1,312	-1,900	-59.2 %	24
Rhode Island	227	214	-13	-5.8 %	3
South Carolina	1,378	427	-951	-69.0 %	39
South Dakota	979	391	-588	-60.1 %	25
Tennessee	1,753	1,255	-498	-28.4 %	7
Texas	10,144	4,256	-5,889	-58.0 %	22
Utah	4,205	1,416	-2,789	-66.3 %	37
Vermont	937	365	-572	-61.0 %	27
Virginia	3,805	1,857	-1,949	-51.2 %	14
Washington	6,073	1,502	-4,571	-75.3 %	46
West Virginia	1,424	726	-699	-49.1 %	13
Wisconsin	4,296	1,608	-2,689	-62.6 %	31
Wyoming	756	219	-538	-71.1 %	41
<b>US</b>	<b>194,710</b>	<b>96,766</b>	<b>-97,945</b>	<b>-50.3 %</b>	

Source: FRAC analysis of administrative CACFP data provided by USDA.

Note: US totals include Guam, Puerto Rico, and the U.S. Virgin Islands.

**Table 13**  
**Change in the Average Daily Attendance of Family Child Care Homes, FY 1996 to FY 2018**

State	ADA Homes FY 1996	ADA Homes FY 2018	Number Change	Percent Change	Rank (Percent Change)
Alabama	11,502	3,702	-7,800	-67.8 %	47
Alaska	2,596	1,415	-1,182	-45.5 %	30
Arizona	9,690	16,021	6,331	65.3 %	3
Arkansas	4,889	2,443	-2,447	-50.0 %	34
California	133,463	108,751	-24,712	-18.5 %	13
Colorado	20,530	6,406	-14,124	-68.8 %	48
Connecticut	10,824	3,829	-6,995	-64.6 %	46
Delaware	6,120	3,649	-2,472	-40.4 %	25
District of Columbia	451	205	-246	-54.5 %	38
Florida	10,372	11,236	864	8.3 %	9
Georgia	18,656	14,891	-3,765	-20.2 %	14
Hawaii	1,424	1,001	-423	-29.7 %	17
Idaho	2,990	1,493	-1,497	-50.1 %	35
Illinois	24,849	21,013	-3,836	-15.4 %	12
Indiana	15,403	22,611	7,208	46.8 %	4
Iowa	10,869	13,345	2,476	22.8 %	5
Kansas	38,066	22,539	-15,527	-40.8 %	26
Kentucky	3,895	2,413	-1,482	-38.0 %	21
Louisiana	39,258	43,203	3,945	10.0 %	8
Maine	10,157	5,032	-5,125	-50.5 %	36
Maryland	29,860	13,814	-16,046	-53.7 %	37
Massachusetts	22,757	22,105	-652	-2.9 %	10
Michigan	35,727	28,499	-7,229	-20.2 %	15
Minnesota	76,763	46,280	-30,483	-39.7 %	23
Mississippi	4,497	4,240	-257	-5.7 %	11
Missouri	17,743	9,816	-7,927	-44.7 %	29
Montana	8,368	4,361	-4,008	-47.9 %	32
Nebraska	24,465	14,170	-10,295	-42.1 %	27
Nevada	1,593	628	-965	-60.6 %	43
New Hampshire	2,624	565	-2,060	-78.5 %	51
New Jersey	7,321	1,930	-5,391	-73.6 %	50
New Mexico	26,653	7,890	-18,763	-70.4 %	49
New York	41,859	78,260	36,401	87.0 %	1
North Carolina	16,725	10,016	-6,709	-40.1 %	24
North Dakota	14,208	7,365	-6,843	-48.2 %	33
Ohio	19,872	12,523	-7,350	-37.0 %	18
Oklahoma	18,995	8,195	-10,800	-56.9 %	40
Oregon	24,182	12,999	-11,183	-46.2 %	31
Pennsylvania	15,085	10,728	-4,357	-28.9 %	16
Rhode Island	1,229	1,432	203	16.5 %	6
South Carolina	8,745	3,181	-5,565	-63.6 %	44
South Dakota	7,289	4,037	-3,252	-44.6 %	28
Tennessee	10,296	11,365	1,069	10.4 %	7
Texas	55,401	33,787	-21,615	-39.0 %	22
Utah	25,453	10,857	-14,597	-57.3 %	41
Vermont	6,981	4,395	-2,586	-37.0 %	19
Virginia	14,204	24,748	10,544	74.2 %	2
Washington	27,222	11,897	-15,325	-56.3 %	39
West Virginia	6,025	3,749	-2,276	-37.8 %	20
Wisconsin	23,506	9,718	-13,789	-58.7 %	42
Wyoming	4,564	1,649	-2,915	-63.9 %	45
<b>US</b>	<b>976,216</b>	<b>720,597</b>	<b>-255,619</b>	<b>-26.2 %</b>	

Source: FRAC analysis of administrative CACFP data provided by USDA.

Note: US totals include Guam, Puerto Rico, and the U.S. Virgin Islands.